

1,400,000 - 1035 ALEXANDRA AVE

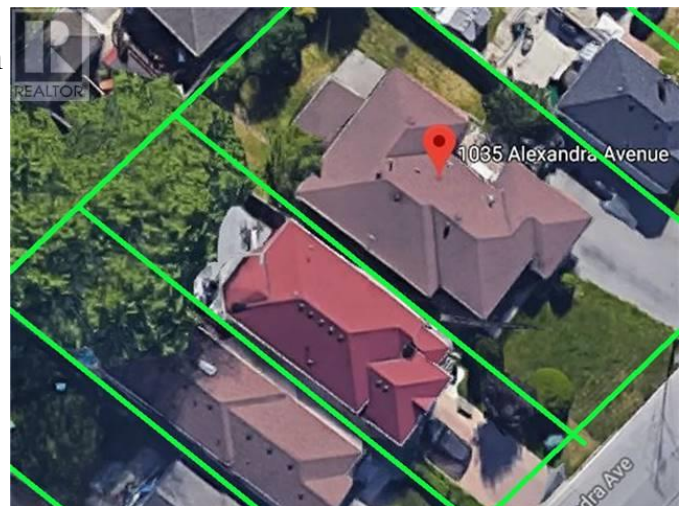
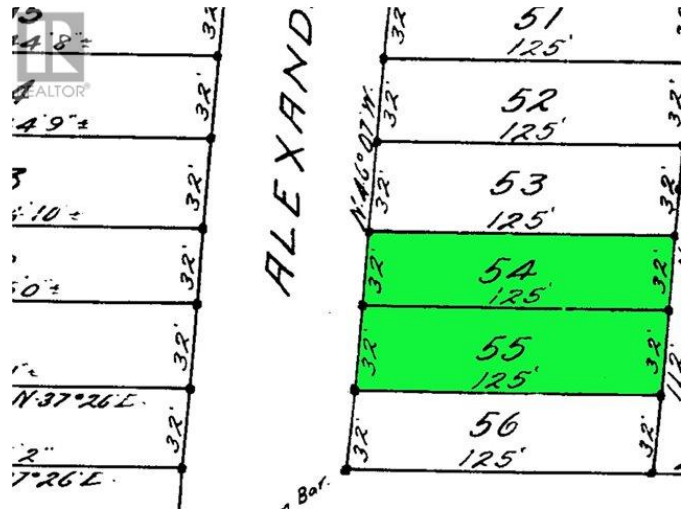
Listing ID: W4232006

1,400,000

4 Bedrooms, 2 Bathrooms Single Family

1035 ALEXANDRA AVE, Mississauga,
Ontario, L5E1Z9

Attention Builders, Renovators & Investors.
1035 Alexandra Ave's Legal Description Is
Lot 54 And Lot 55. Fantastic South East
Mississauga Location, Situated Between
Long Branch & Port Credit Go, Minutes
Away From Lakeview Golf Course,
Lakefront Promenade Park & Marina. Many
Newer Builds And Enlarged Homes In The
Area. Move-In Or Rent Out -> Land Bank
For Future Development -> Or Start
Today!**** EXTRAS **** Cambria
Quartz Kit Counters, Hunter Douglas
California Shutters, Elfs, Ss (Fridge, Stove,
Built-In Dshwshr), Counter Top Microwave
(On Pantry Wall), Washer, Dryer, Bathroom
Mirrors, Alarm System, Central Ac, Gas
Burner & Equipment (Furnace) (id:21172)



MLS®, REALTOR®, and the associated logos are trademarks of The Canadian Real Estate Association
Data Provided by: Toronto Real Estate Board
Last Modified: 31/08/2018 02:34:39 PM
Listing Office: RIGHT AT HOME REALTY INC.